

Migrating from SMS to ION Enterprise

Tony Hunt

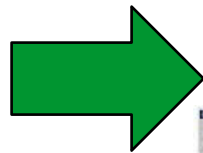
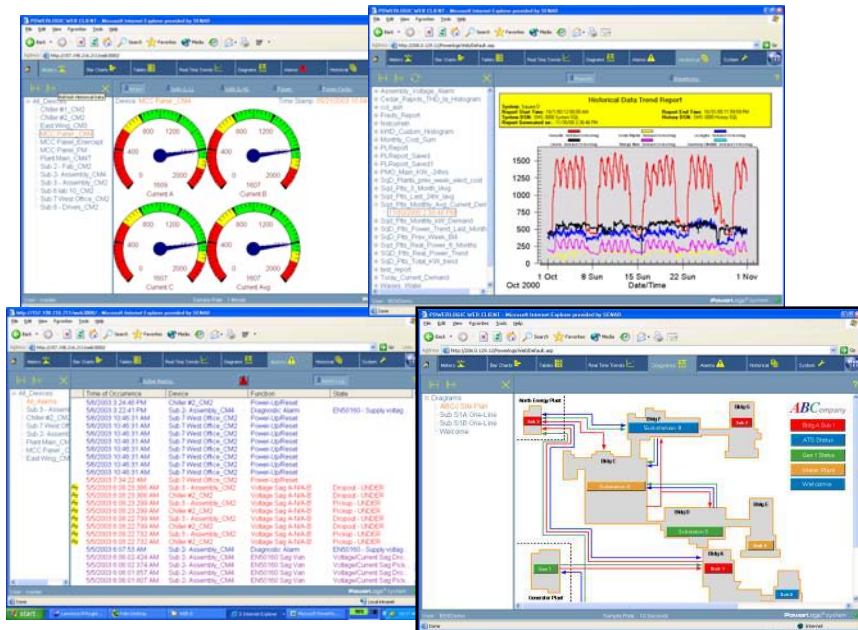
Software Offer Management

Energy Management Solutions - Power

Moving from SMS to ION Enterprise

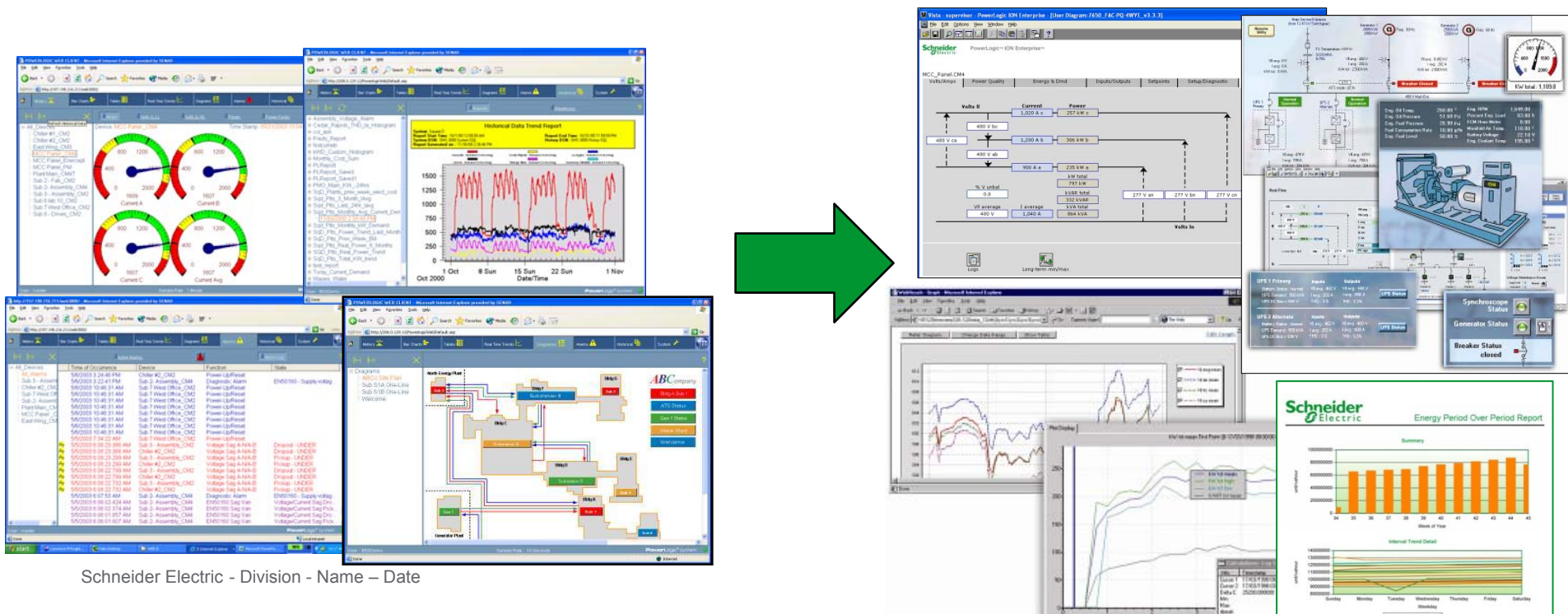
- Voice of the customer

“I understand that technology changes. Give me advance notice so that I can budget for upgrades. And I need my devices to be supported”

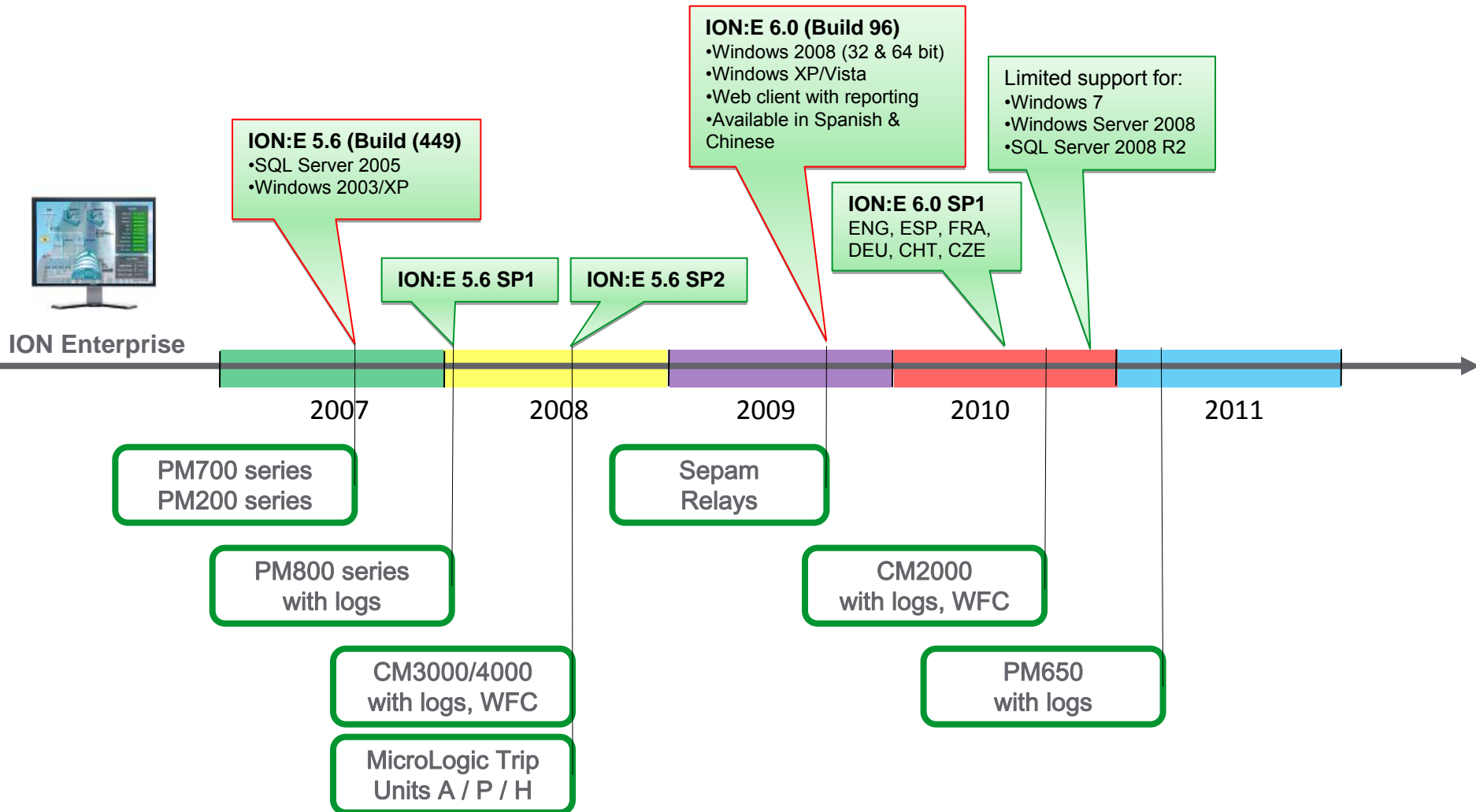


SMS and ION Enterprise are different

- Both platforms offer the same high level features for advanced power monitoring and PQ analysis
- They have different interfaces, work flows and terminologies
- There will be training available for SMS customers to learn the new ways to do things in ION Enterprise



Support for PowerLogic Meters



Device Driver Support in ION:E

Native Device Drivers

- BCPM
- CM4000 Series
- CM3000 Series
- CM2000 Series 
- Micrologic P
- Micrologic H
- Micrologic A
- PM800 Series
- PM700 Series
- PM200 Series
- Sepam Series 80
- Sepam Series 48
- Sepam Series 40
- Sepam Series 20
- Sepam Series 10
- Momentum EPSS PLC
- Momentum WAGES PLC
- PM600 Series

L2 Device Drivers

- Altistart 48
- Altivar 61/71
- BCM 42 (50 amp)
- BCM 42 (100 amp)
- CM 100-200 Series
- Model 98
- MotorLogic Plus
- MotorLogic Plus II
- MVSS / RVSS
- PM300 Series
- PM500 Series
- PM600 Series
- Sepam Series 2000
- TeSysT
- TeSysU
- Veris Energy Meter
- Veris Enercept Meter
- Veris Multi Circuit Meter (MCM)
- TORO MC08 / MC09 / MC18

When can I migrate to ION Enterprise?

- SMS to ION:E migrate

- For SMS customers who want or need to make the move now
 - IT department is moving to a new platform that SMS does not currently support (e.g Windows Server 2008 R2 / SQL Server 2008 R2)
 - You are going to be using devices that only ION Enterprise supports (ION meters, E5600, DM6200, PM1200, E4800, EGX300 Logs)
 - You have the budget and your SMS system needs an upgrade anyways
 - You do not really use your SMS system much and now you are interested in re-investing & building a modern power monitoring system.
 - You have both SMS and ION Enterprise systems across multiple sites and you wish to standardize on ION Enterprise across all sites.

- If you need or want to move to ION Enterprise:

- Contact your local Schneider Electric Representative

The cost to migrate to ION Enterprise

- There will be a cost associated with:
 - Migration of SMS system and historical data
 - Start up for new ION:E system
 - Creating custom Vista diagrams, new applications, configure reports

Moving to ION:E requires a new Server

- Can you recommend and influence the new ION:E server platform?
 - Windows 2008 R2 + SQL Server 2008 R2 is best for performance
 - ION:E Enterprise supports a separate distributed Database Server

SMS Migration Tools

- We are actively developing a SMS to ION:E migration process
 - Migration tools and documentation will reduce time/cost to move to ION:E

<i>Database and history</i>	Automated by Migration Tools	Requires manual steps to recreate	Not Supported
SMS System Inventory	■		
Network (devices, routes, etc)	■		
History data (AR)	■		
History data (SMS History)	■		
Alarm history			■
Waveform captures		■	
<i>System Configuration</i>			
User accounts (passwords, privileges, etc)		■	
Device names and connection settings	■		
Virtual Circuit Nodes	■		
PC Logging	■		
PC Alarming	■		
TOU Schedules		■	
Data log & Waveform log upload Tasks		ION:E 6.1	
Reset Tasks		■	
Clock sync Tasks	n/a	n/a	n/a
3rd party COMTRADE import			■
Custom (3rd party) device types	■		
Configured reports and report schedules		■	

Key Messages

- SMS will no longer be sold after 2010
- Technical support for SMS customers will continue to be available for several years.
- We have options for customers who want or need to migrate to ION Enterprise 6.0

Questions

